

Hydrophore

Technical data:

- Production according to the directive PED/97/23/EC, using the norms of AD 2000
- Outer surface gritblasting in grade Sa 2.5 according to PN-ISO 8501-1
- External anticorrosion coating in corrosion class C3 (M) or higher
- Pressure 10 bar
- Working temperature -20°/+40°
- Inner surface coated with epoxy paint, for drinking water with PZH certificate

Destiny:

Hydrophore tank is used to storage the water in fire water installations and to maintenance (stabilize) the required water pressure in the water supply and adequate security of its supply (water storage) in case of a sudden intake.



Example specifications of hydrophore tank:

No	Parameter	Value	Unit
1	Nominal diameter	2300	mm
2	Capacity	23640	Litre
3	Maximum PS pressure admissible	10,00	bar
4	Minimum/maximum TS temperature	6 / 50	°C
5	PT test pressure	14,30	bar
6	Working medium	water/air	
7	Empty tank weight	4902	kg
8	Tank weight during pressure test	30113	kg
9	Tank weight in operation – approx.	~21000	kg
10	Estimated life of equipment ¹⁾	20	years

¹⁾ In order to ensure the estimated life of equipment, the instructions of this manual are to be complied with

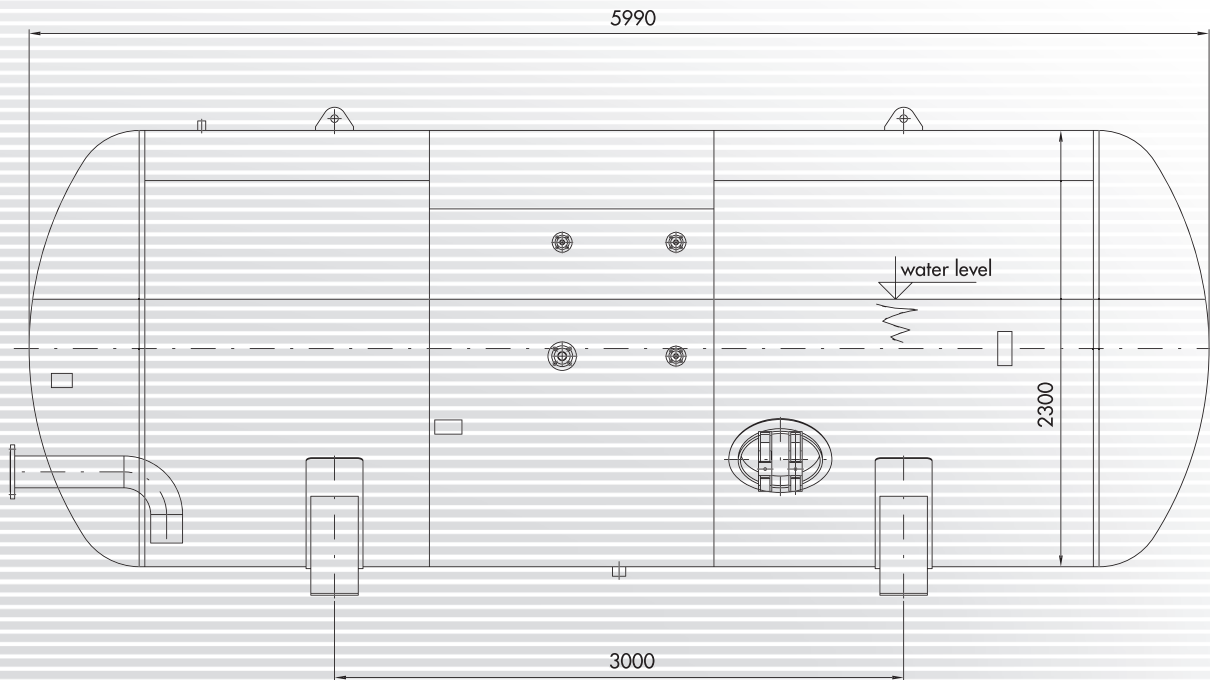
Other capacity available in range 5-100 m³

Certification:  0045

www.cgh.com.pl



CGH Polska Sp. z o.o.
85-461 Bydgoszcz, ul. Srebrna 39
e-mail: info@cgh.com.pl • tel. (48 52) 370 66 74, 53



Symbol	Description	Size/DN	PN	Abutment type in flange connections	Screw/nut material	Gasket material	Assembly tension	Standard
N1	Water inlet/outlet	DN150	16	01B	5.6 / 5	Rubber hardness – over 75 acc. to Shore's scale	59,89	PN-ISO 7005-1
N2	Water inlet	DN40	16	01B	5.6 / 5	Rubber hardness – over 75 acc. to Shore's scale	12,47	PN-ISO 7005-1
N3	Compressed pressure inlet	DN20	16	01B	5.6 / 5	Rubber hardness – over 75 acc. to Shore's scale	6,34	PN-ISO 7005-1
N4	Water level gauge	DN20	16	01B	5.6 / 5	Rubber hardness – over 75 acc. to Shore's scale	6,34	PN-ISO 7005-1
N5	Service connector pipe	G-1 int.	10	-	-	-	-	-
N6	Drain	G-2 int.	10	-	-	-	-	-
M1	Manhole	320/420	10	-	St3S / 5	Rubber hardness – over 75 acc. to Shore's scale	24,77	According to manufacturer