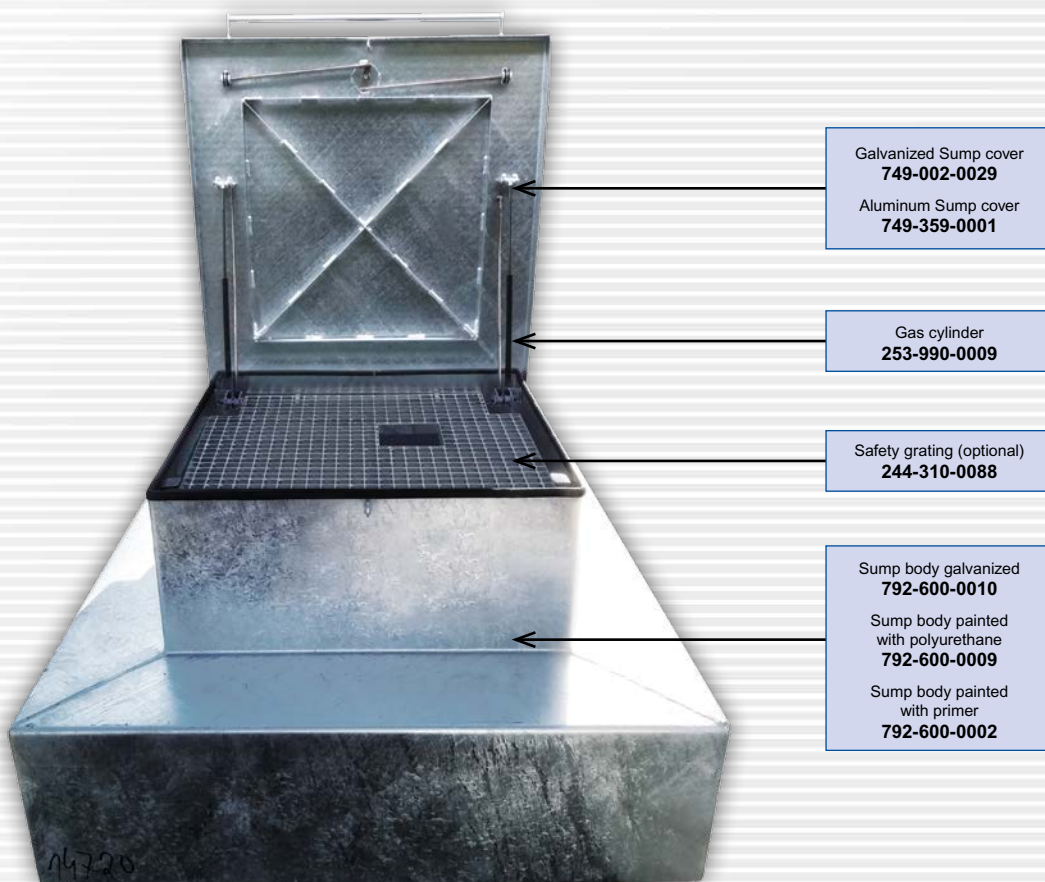


# Sump for green area type TB1

Sump for green area TB1 1200x1200, h=1100  
with clearance 780x780 and cover 860x860 (7KN)

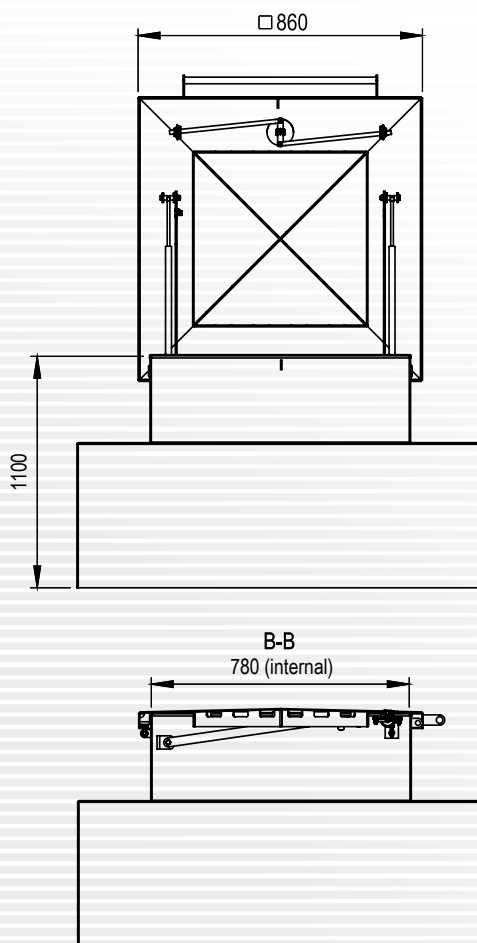
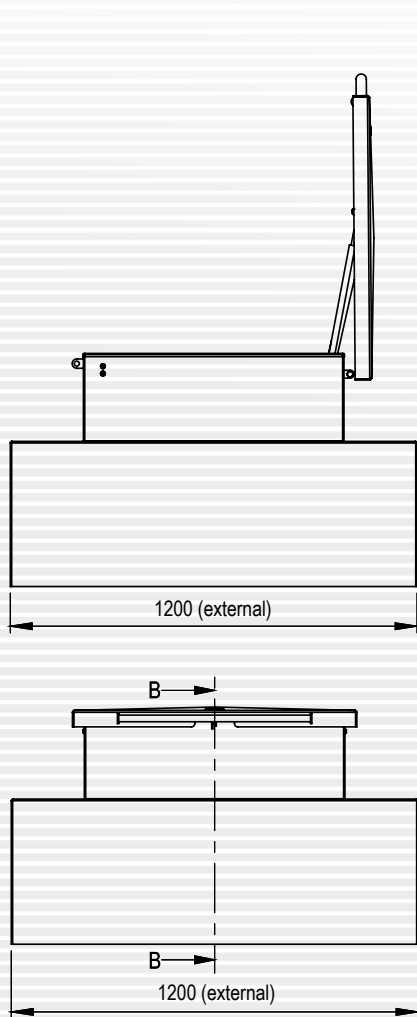


| Sump type and code            | Version  | Equipment                                     |   |   |   |   |                              |
|-------------------------------|--|---|---|---|---|---|------------------------------|
|                               |  | Sump body, hot dip galvanized<br>792-600-0010 | Sump body painted with polyurethane<br>792-600-0009 | Sump body painted with primer<br>792-600-0002 | Galvanized sump cover with a lock<br>749-002-0029 | Aluminum sump cover with a lock<br>749-359-0001 | Gas cylinder<br>253-990-0009 |
| <b>TB1-ZZ</b><br>792-600-0000 | Sump with galvanized body and galvanized cover           | ■   | —   | —   | ■   | —   | ■                            |
| <b>TB1-EZ</b><br>792-600-0003 | Sump with polyurethane painted body and galvanized cover | —   | ■   | —   | ■   | —   | ■                            |
| <b>TB1-ZA</b><br>792-600-0004 | Sump with galvanized body and aluminum cover             | ■   | —   | —   | —   | ■   | ■                            |
| <b>TB1-EA</b><br>794-600-0001 | Sump with polyurethane painted body and aluminum cover   | —   | ■   | —   | —   | ■   | ■                            |
| <b>TB1-PZ</b><br>794-600-0002 | Sump painted with primer and galvanized cover            | —   | —   | ■   | ■   | —   | —                            |
| <b>TB1-PA</b><br>794-600-0003 | Sump painted with primer and aluminum cover              | —   | —   | ■   | —   | ■   | —                            |

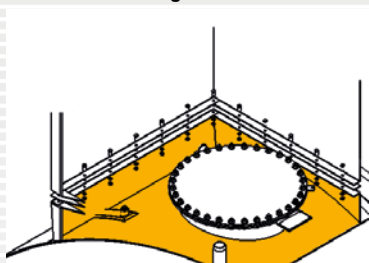
Optional equipment:

244-310-0088 – Safety grating





Method of mounting to the tank



Installation to tank access shaft with screws.

