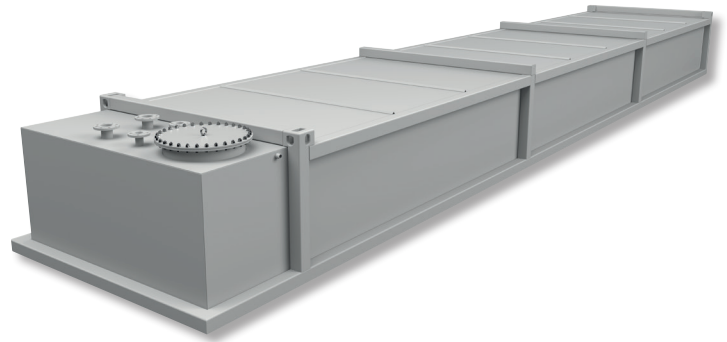


# FUEL TANKS for power backup systems „Belly tank”



Belly tanks are used as backup fuel storage tanks to supply emergency power generators for data centres. Can be designed to carry the weight of a generator or a container. It can also be placed next to the unit. Tank could also be delivered as cylindrical tank.

With belly tanks, data centers can operate for extended periods during power blackouts, which is essential for maintaining operational continuity and minimizing the risk of data loss or service disruption.

We manufacture “belly tanks” in both standard container sizes and in sizes specified by the customer. At the customer’s request, the tanks can be equipped with heating and insulation.



## Technical specifications

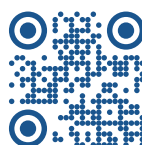
- Single or double skinned, cubic tanks made from S235 steel
- Optional sloped tank bottom
- Standard anti-corrosion protection – C3M – optional C4M/H, C5M/H
- Inside coating also available
- Can be delivered electronic leak detection system
- Number, size, and location of fittings to be determined during the design phase with the client
- Tanks manufactured according to EN 1090

Our typical tank sizes

Lenght	Width	Height	Capacity
[mm]	[mm]	[mm]	[m <sup>3</sup> ]
3550	1000	1500	5
3000	2500	1500	10
4000	2000	2000	15
9000	3200	520	15
9125	2450	1200	26
12000	3000	800	30
16000	3200	800	40

\*Other sizes are available upon request, including those designed for standard 20” and 40” containers, as well as customized footprints tailored to specific requirements.

Belly tanks are often supported by bigger underground double skinned tanks. Ask CGH for advise.



### CGH Group

ul. Srebrna 39  
85-461 Bydgoszcz, Poland  
www.cgh.com.pl  
info@cgh.com.pl

### CGH Belgium nv

Rijksweg 10C  
B-2880 BORNEM  
www.cghbelgium.com  
info@cghbelgium.com

### CGH Nordic A/S

Jernbanegade 8, 1  
DK-7160 Tørring  
www.cghnordic.com  
info@cghnordic.com

### CGH South Africa (PTY) Ltd.

21 Chenik St, Chamdor  
ZA-1754 Krugersdorp  
www.cgh-rsa.co.za  
info@cgh-rsa.co.za