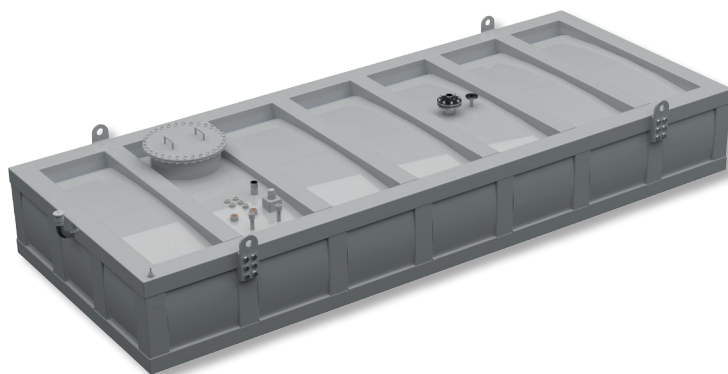


FUEL TANKS

for power backup systems



Belly tanks



Belly tanks are used as backup fuel storage tanks to supply emergency power generators for data centres. They can be designed to carry the weight of a generator or a container and can also be placed next to the unit. CGH Group also supplies cylindrical tanks.

With belly tanks, data centres can operate for extended periods during power blackouts, which is essential for maintaining operational continuity and minimizing the risk of data loss or service disruption.

CGH Group manufactures belly tanks in both standard container sizes and in sizes specified by the customer. At the customer's request, the tanks can be heated and insulated.



Technical specifications

- Single or double skinned, rectangular tanks made from S235 steel
- Optional sloped tank bottom
- Standard anti-corrosion protection – C3M – optional C4M/H, C5M/H
- Inside coating also available
- Can be delivered with electronic leak detection system
- Number, size and location of fittings to be determined during the design phase with the client
- Tanks are CE marked according EN1090.

Belly tanks are often supported by larger underground double skinned tanks. Ask CGH for advise.



Our typical tank sizes available capacities range from 10 to 50 m³.

| Width | Length | Height | Usable capacity |
|-------|--------|--------|-------------------|
| [mm] | [mm] | [mm] | [m ³] |
| 2438 | 6058 | 600 | 6,1 |
| 2438 | 9125 | 1200 | 18,5 |
| 2438 | 12192 | 1910 | 39,4 |
| 3000 | 13000 | 800 | 21,6 |
| 3000 | 14000 | 1000 | 29,1 |
| 3000 | 14600 | 1100 | 33,4 |
| 3200 | 9000 | 800 | 16,0 |
| 3200 | 16000 | 800 | 28,4 |
| 3600 | 12300 | 600 | 18,4 |
| 3640 | 12730 | 530 | 17,0 |
| 3900 | 20000 | 700 | 37,9 |
| 4000 | 13110 | 800 | 29,1 |
| 4000 | 14602 | 1100 | 44,6 |

*Other sizes are available upon request, including those designed for standard 20" and 40" containers, as well as customized footprints tailored to specific requirements.

CGH Group

ul. Srebrna 39
85-461 Bydgoszcz, Poland
www.cgh.com.pl
info@cgh.com.pl

CGH Belgium nv

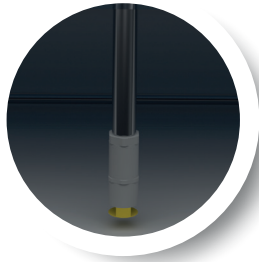
Rijksweg 10C
B-2880 BORNEM
www.cghbelgium.com
info@cghbelgium.com

CGH Nordic A/S

Jernbanegade 8, 1
DK-7160 Tørring
www.cghnordic.com
info@cghnordic.com

CGH South Africa (PTY) Ltd.

21 Chenik St, Chamdor
ZA-1754 Krugersdorp
www.cgh-rsa.co.za
info@cgh-rsa.co.za



Foot valve with stainless steel filter

Installed at the end of the suction pipe, it prevents fuel backflow and protects the system from impurities with an integrated stainless steel filter.



Overfill prevention valve

An automatic valve installed at the tank inlet, designed to shut off fuel flow once the maximum liquid level is reached. Suitable for use with diesel, HVO, AdBlue® and water.



Vent valve

Ensures proper venting by equalizing pressure during filling and emptying processes, protecting the tank from structural damage.



Electronic level gauge with alarms

A level indicator with a backlit display, providing realtime readings in both liters and percentages. Features include audible and visual alarms, a 4-20 mA output and weather-resistant housing (IP65).



Interstitial space monitoring probe

Monitors the interstitial space between tank walls and activates both visual and audible alarms in the event of a leak, vacuum leak detection system also possible.



Fuel polishing system

This system removes solids, water and sediment from diesel or HVO, protecting fuel quality and equipment.

Separate systems prevent cross-contamination.